



*"At VingCard Elsafe, We listen"*

VingCard electronic locking systems



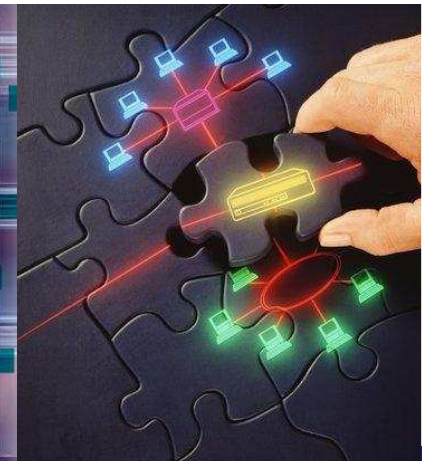
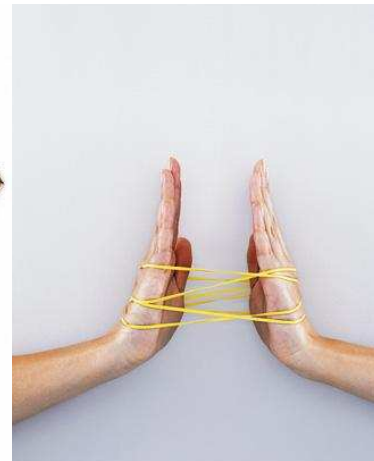
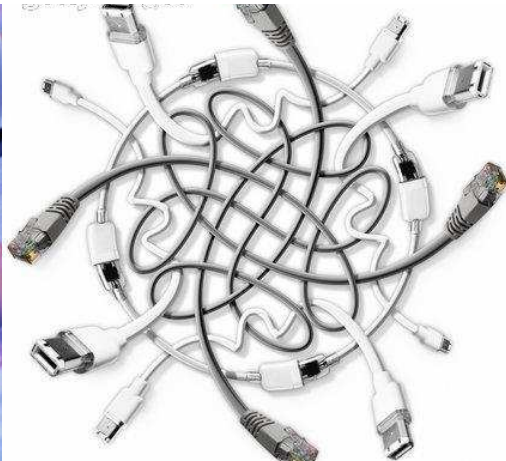
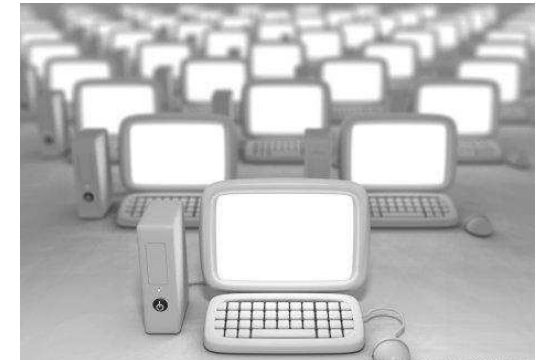
## We start by listening to you and your guests



We provide solutions that help you improve your operations and offer security and peace of mind to your guests

# Main issues to consider when choosing an electronic locking system

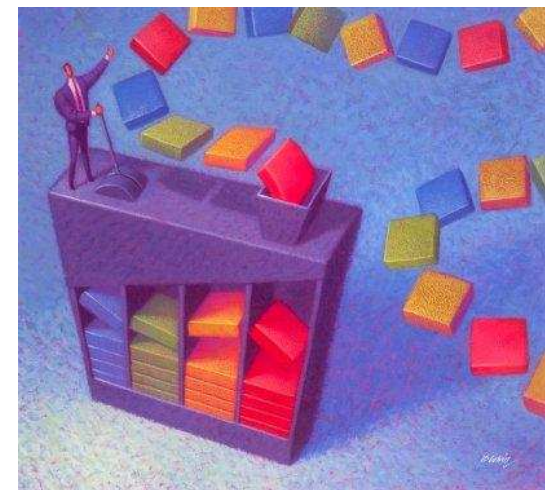
- System setup
  - Integration with existing IT environment
  - PMS Interfaces
  - Encoder networks
- How does VingCard solve those issues?





# VingCard solutions to System Set up

- Easy, flexible and stable system set up
  - True TCP/IP network capabilities. Encoders can be connected directly to the hotel's own LAN and shared between workstations.
  - Flexible PMS & POS interface options. Choose between serial, TCP/IP and direct DLL integration.
  - Windows® software platform.
  - Compatible with automatic check-in kiosk





# Main issues to consider when choosing an electronic locking system

- Access control and management
  - Number of user groups & access areas
  - Time control of employee cards
  - Special access areas
  - System access & control
- How does VingCard solve those issues?





# VingCard solutions to Access Control

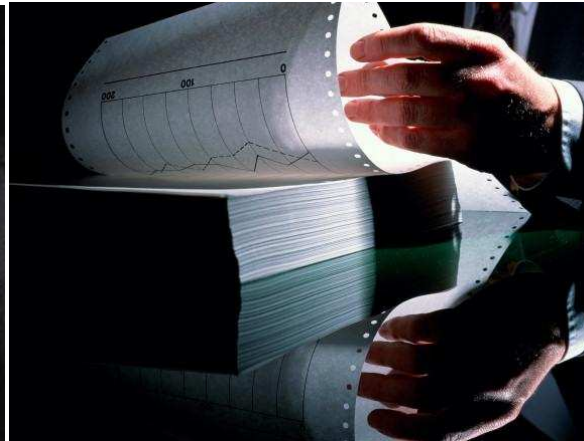
- Access control and management
  - Manage up to **10,000 rooms**
  - **Unlimited** access area configurations
  - Customize up to **256 unique user groups**
  - Define up to **53 special access areas**
  - Define up to **8 different time tables**
  - **Module based** system access
  - No hierarchical limitations

**Total control of  
Whom Where When**



# Main issues to consider when choosing an electronic locking system

- Day-to-day operations
  - Effective Keycard management
  - Audit trail & reports
  - Front desk stability
  - User friendliness
- How does VingCard solve those issues?

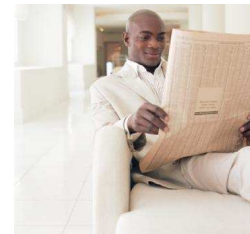




# VingCard solutions to Day-to-day Operations

## 1. Effective Keycard Management

- Guest Keycards
  - Allocate **any 3 room** on a guest card at check in
  - **Pre-issue** guest cards in real time
- Employee Keycards
  - Cancel **individual employee** cards or **complete user group without reprogramming locks**
- Fail safe Keycards
  - Interrelated to guest cards for added security



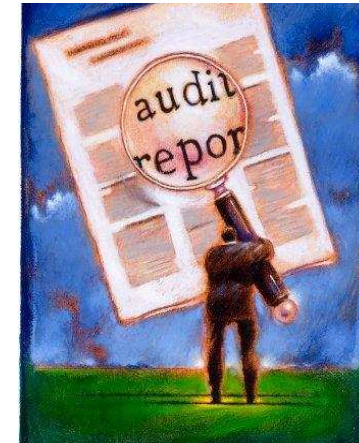
**Right balance between security and comfort**



# VingCard solutions to Day-to-day Operations

## 2. Detailed Audit Trail & Reports

- Locks audits
  - Who accessed which room when
  - 600 last events stored in each lock
- System reports
  - All system activity is tracked
  - Detailed system setup reports
  - Warning before employee keycard expiration



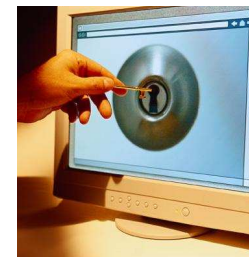
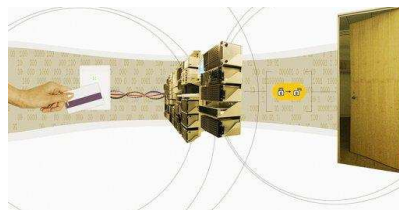
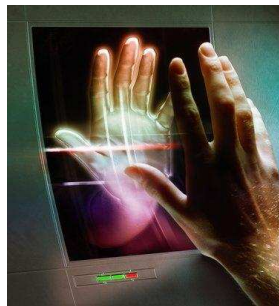
# VingCard solutions to Day-to-day Operations

## 3. Software platform Stability

- Advanced **SQL database** platform
- **Automatic** live backup
- Auto **recovery & rollback** function



**Avoid computer crash**



# VingCard solutions to Day-to-day Operations

## 4. User Friendliness

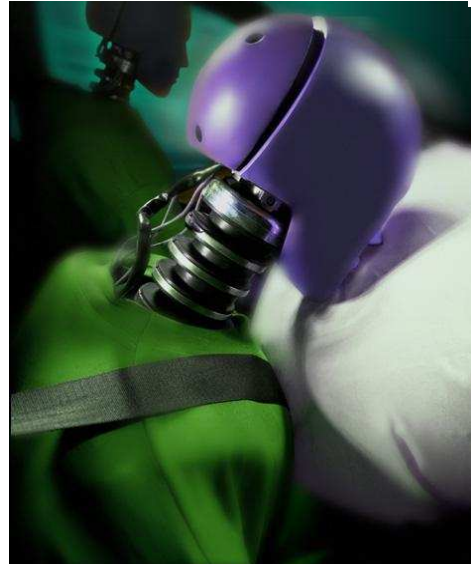
- Easy and intuitive to use
- Touch Screen with help menus
- 26 years experience in developing user friendly systems for hotels





# Main issues to consider when choosing an electronic locking system

- Lock Hardware
  - Physical security
  - Design
- How does VingCard solve those issues?



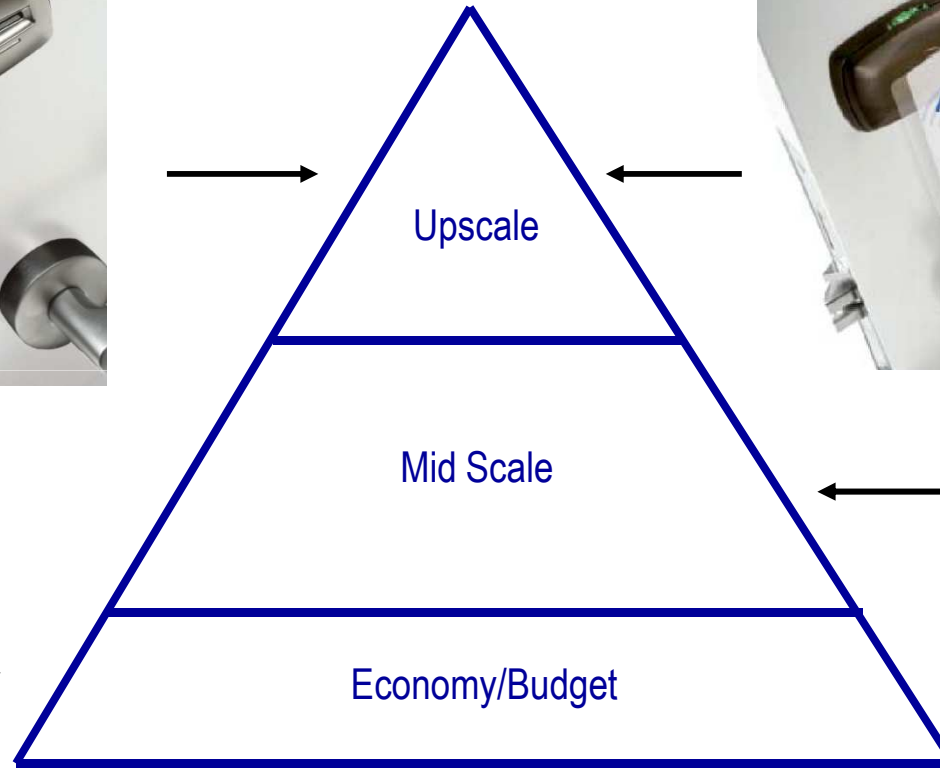


# Complete Product Range

*Signature*  
by VingCard®



*Signature*  
by VingCard®



**alfa**  
by VingCard®



**Classic**  
by VingCard®

One solution for each hotel  
segment/needs



# Electronic Locks

## ALFA - Matching reliable security with affordability



- Flash RAM memory.
- 100 event audit trail.
- Powered by 3AA batteries, providing 3 years life time
- Motorized lock cases with locking mechanism located in the lock case (ie. no clutch in escutcheons).
- No accessible parts from the outside (i.e. no set screws on handles etc).
- High security heavy duty mortise lock case available in ANSI or EURO versions with a 3-point anti friction steel latch and case
- Hardened full 1- inch throw (ANSI) deadbolt.
- The lockcase is designed to ANSI grade 1 standards.
- Panic release – single action egress for emergency situations
- Automatic deadbolt option
- Slim plate design
- 2 finishes: Rugged Charcoal and Grey Metallic



# Electronic Locks

## Classic - A robust lock you can trust



**Classic**  
by VingCard®

- Flash RAM memory.
- **600 event audit trail.**
- **Optional Dual reader (mag/smart)**
- Powered by 3AA batteries, providing 3 years life time
- Motorized lock cases with locking mechanism located in the
- Lock case (ie. no clutch in escutcheons).
- No accessible parts from the outside (i.e. no set screws on handles etc).
- High security heavy duty mortise lock case available in ANSI or EURO versions with a 3-point anti friction steel latch and case
- Hardened full 1- inch throw (ANSI) deadbolt.
- The lockcase is designed to ANSI grade 1 standards.
- Panic release – single action egress for emergency situations
- Automatic deadbolt option
- **Emergency cylinder option**
- **Slim plate design. Wide range of handles and finishes**

# Electronic Locks

## Signature - Design your security

Signature  
Trend



Signature  
Décor



*Signature*  
by VingCard®

- Flash RAM memory.
- **600 event audit trail.**
- **Optional Dual reader (mag/smart)**
- **2 Bezel configurations: contemporary and traditional (Trend and Décor)**
- Motorized lock cases with locking mechanism located in the Lock case (ie. no clutch in escutcheons).
- No accessible parts from the outside (i.e. no set screws on handles etc).
- High security heavy duty mortise lock case available in ANSI or EURO versions with a 3-point anti friction steel latch and case
- Hardened full 1- inch throw (ANSI) deadbolt.
- The lockcase is designed to ANSI grade 1 standards.
- Panic release – single action egress for emergency situations
- Automatic deadbolt option
- **Emergency cylinder option**
- **Exclusive Optional Designers' Collection handles**

[Click here for detailed Signature presentation](#)

# Electronic Locks

## Signature RFID - Contact Less technology



*Signature*   
by VingCard®

- Radio Frequency Identification (RFID), future technology in electronic locking systems for hotels.
- **13,56 MHz**
- **Compatible with both**
  - **ISO 14.443 A (MIFARE)**
  - **ISO 14.443 B**
  - **ISO 15.693**
- No need to insert the keycard
- Flexibility to work with many different carriers (from low cost paper ticket up to customized tags for VIP guests)
- Greater flexibility to personalize the experience to your guests and enhance the image of your hotel
- Sealed components
- Plus all the Signature benefits



# Electronic Locks

## Signature RFID - Contact Less technology

- Compatible with NFC:
  - Near Field Communication
  - Cell phone as RFID carrier
  - Encrypted key through SMS

*Signature*<sup>®</sup>  
by VingCard<sup>®</sup>



**NFC**  
**FORUM**





# Operating Systems

## 2800 – Simple touch. Serious security



**2800**  
by VingCard®

- Standalone terminal. **No need for PC.**
- State-of-the-art **touch screen encoder.**
- Up to 400 room hotel
- **Network: up to 10 encoders.**
- Ethernet connection.
- **Flexible PMS & POS interface options.**
- Intuitive menus for your staff.
- Easy configuration and daily maintenance.
- **Robust database back up.**
- Handy lock connector (MiniLink) for programming and communication.
- Easy to upgrade software on terminal through USB.
- Control of back of office and other hotel areas like elevators.
- Easy to change database configuration.
- Compatible with all VingCard electronic locks.
- Multi-language platform: English, Spanish, French, German
- And much more...

# Operating Systems

## VISION - The ultimate solution in electronic locking systems



**vision**  
by VingCard<sup>®</sup>

- **Powerful SQL client server database technology** for stable, high security operations and effective back up/restoring options.
- Up to 10.000 room hotel
- **True TCP/IP network capabilities.** Encoders can be connected directly to the hotel's own LAN and shared between workstations.
- **Flexible PMS & POS interface options.** Choose between serial, TCP/IP and direct DLL integration.
- Windows<sup>®</sup> software platform.
- Supports both magnetic stripe and dual magnetic stripe and smart card operations.
- Compatible with Automatic Check-in Kiosks.
- Manages up to 8 different weekly time/shift tables. Customize every day of the week in 30 minute increments.
- Manages up to 53 different common door definitions.
- And much more...



## Optional Mechanical Override



- **Use of mechanical Key Override is registered in the lock memory for audit trail.**
- **5 times recodable cylinder (2 construction levels plus 3 customer levels)**
- Mechanical cylinder can be either visible or not visible.
- The high quality cylinders offer superior pick resistant through its 7 pin high security profiles and anti pick drivers.
- In addition the cylinders are carefully constructed with a narrow channel paracentric keyway to maximize security.
- Unique special security bracket for added security.



## Design continuity for other hotel areas



- Mechanical range for Bathroom and passage doors
- Mechanical range for Back-of-house and other hotel areas
- Emergency Exit Devices
- Remote controllers
- Parking readers
- Elevator controllers
- Energy saving units
- Room number plates
- Door retainer
- Door viewer
- Door closers



# Summary

- World leader with Over 26 years experience in providing security solutions to Hotels
- VingCard Elsafe has products installed in more than 35.000 properties worldwide, securing in excess of 6 million hotel rooms
- Worldwide network and local service and support in over 165 countries, including Romania
- Reliable and Design centric electronic locks
- Powerful and user friendly operating systems for your guest and staff

***We are where you are 24 hours a day, 365 days a year!***